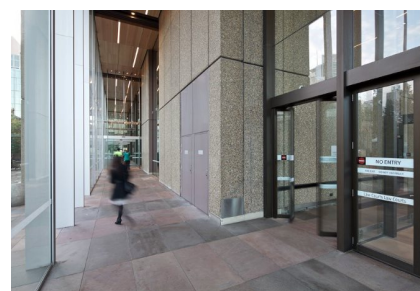
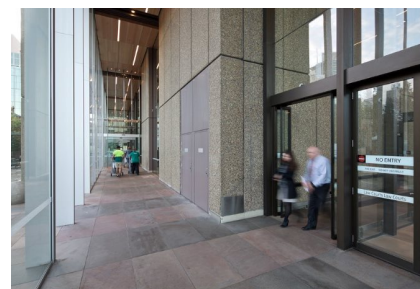
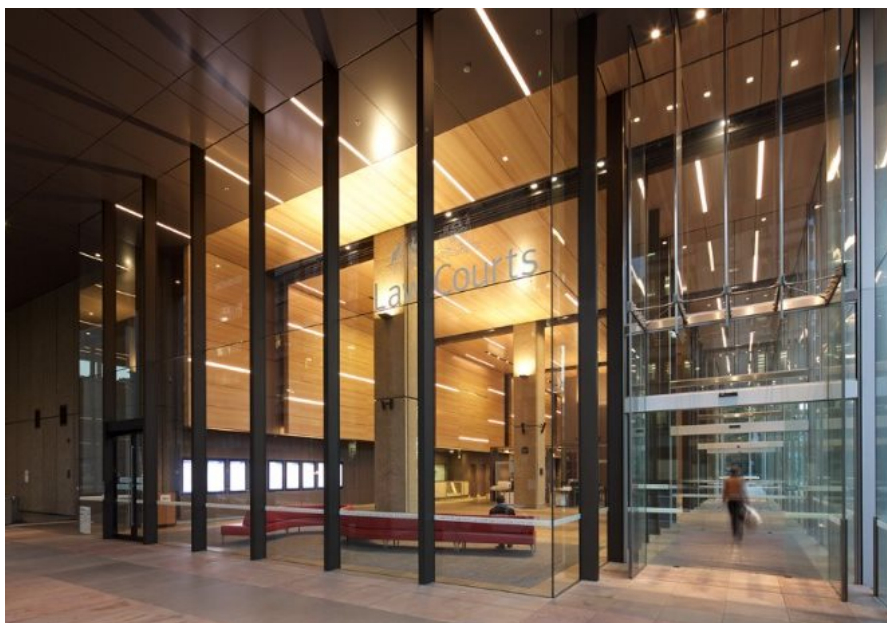


# Queen Square Law Courts

## Case Study



The Law Courts building opened in 1977 and operated for more than 30 years without a Life Cycle program or any substantial upgrading. From 2005 to 2014 a comprehensive refurbishment program was undertaken, designed by a Group GSA + Hassell Architects.

As part of the refurbishment to the ground floor foyer facade, 4 off record STA 20 automatic sliding doors, with frameless glass door wings were installed to the Philip and Macquarie Street entries.

2 off record FTA 20 bi-folding door operators were also installed as part of a secured exit lane system, allowing people to freely exit to the building, without allowing people to enter without using the metal detectors.

<http://www.groupgsa.com/en/work/projects/public-buildings/queens-square-law-courts-0>

# Queen Square Law Courts

## Case Study



# Queen Square Law Courts

## Case Study

